



- A - Ultra Sonic Detector (detects real presence) calibratable between 10cm-400 cm
- B - Infrared Receiver (point your remote and control : temperature, Lights, Music ...
- C - Light Intensity (LUX sensor) detect day light for energy & Harvesting saving
- D - 3 Zone Security burglar & safty alarm (1 PIR + 2Auxiliary NO/NC)
- E - Logic Automation functions & commands like (if, then, and, or, Nand ...)
- F - IR Emitter (transmit multidevice codes to operate split AC or media ++)
- G - 4 relays 6Amp, each good for :lightings, fans, Alert, parking, space display ..
- H - Motion Sensor for occupancy, macros & protection security
- I - Temperature Sensor for Air/Zone temperature & air quality
- J - Built in Timer Clock for timed events & actions.

10 in 1 sensor & controller

Product Name: (Human 10 in 1 Sensor)

Mount: Mainly Ceiling Mount / Optional Wall mount Using Bracket Accessory

Voltage Tolerance: 8VDC ou to 32VDC communication Voltage with Reverse Polarity

4 Relay Voltage Acceptance: 24VDC Up to 240VAC Each Differently

Ultrasonic Sensor Distance: 15 cm up to 5.7 Meters

PIR range: 360 deg. 6 meter Radius at 2.7 Meters Height

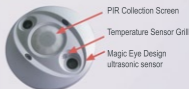
Power Consumption: 24 mA Stand alone, or (Via BUS wire Loop = (Green))

Unique Features:

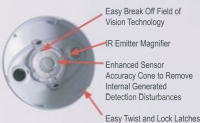
- 1 – Built in 32 Logics (if, then, and, or, Nand, Nor ++)
- 2 – Built in Timers & Clock
- 3 – Stand Alone Operation Possible
- 4 – Bus Enabled Operation Possible
- 6 – PIR Motion Sensor Built in (Calibratable Individually)
- 7 – Ultrasonic Occupancy Detector Built in (Calibratable Individually)
- 8 – Lux—Light Intensity Sensor Built In
- 9 – Infra red Receiver (For Remote Control Hand held Command Operation)
- 10– Infra Red Transmitter
- 11– Temperature sensor (Calibratable Individually +-5)
- 12– Built in 2 Dry input Ports for Connecting any Auxiliary Security or Safety Sensor or any Push Buttons (2 Zone)
- 13– Built In 4 Relays Each is 10A max to control any Light, Fan, Siren/Flasher, Motor, HVAC ++ etc.
- 14– Built In Complete Security Alarm Logic for vacation, Away, Arm Disarm ++
- 15– Complete New Energy management And Direction Logic and capability
- 16– Breakable Extended Field of Detection Technology that help Mask and expand detector Direction and field

Application Examples:

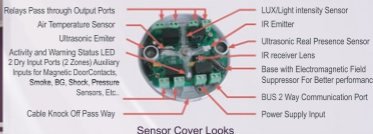
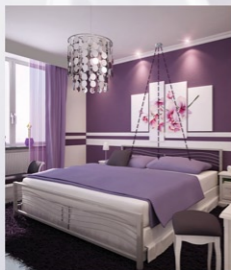
- A– Hotel Room Real Occupancy and Energy Saving and Management Operation
- B– Parking Air Quality, Parking Space & Energy Management
- C– Living Area or Toilet Energy and Air Circulation as well as lighting Applications
- D– Complete Stand alone Input and Output security and Automation Unit
- E– Many More, Kindly Refer to your Trained Installer's green and Smart ideas



Sensor Shape after Installation



Sensor Cover



Other Physical characteristics:

- Weight: less than 150 grams
- Size: 7cm Dia, 3.Cm height
- Color: White Pintable, All
- Parts: Removable & re-mountable
- Oper. Temp: -10– 40 Deg cell.
- Visible Light: Blue or Red LED

More Features:

- Communication: Smart-BUS
- Addressability: Broadcast
- Can Work Fully Stand Alone: Yes
- Built In Logics: yes
- Works As security Panel: Yes
- IR Emission: Directional up to 6M
- IR reception: Omni Directions